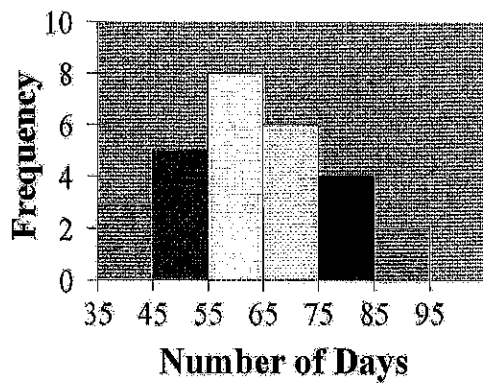


# Ch. 2 QUIZ

Name: \_\_\_\_\_ Date: \_\_\_\_\_

1. If a frequency distribution had class boundaries of 132.5–147.5, what would be the class width?
2. What are the boundaries of the class 12-15?
  - A) 11.5 and 15.5
  - B) 10.5 and 16.5
  - C) 12 and 15
  - D) 3
3. What is the lower class limit of the class 13–17?
  - A) 15
  - B) 17
  - C) 13
  - D) 12.5
4. For grouped frequency distributions, the \_\_\_\_\_ is obtained by adding the lower and upper limits and dividing by 2.
5. The \_\_\_\_\_ of a specific class is the number of data values contained in it.
6. When data are collected in original form, they are called \_\_\_\_\_.
7. Which of the following pairs of class limits would be appropriate for grouping the numbers 10, 13, 8, and 15 ?
  - A) 7-11 and 11-15
  - B) 8-10 and 13-15
  - C) 8-10 and 11-15
  - D) 8-11 and 12-15
8. What are the boundaries of the class 1.87–3.43 ?
  - A) 1.82–3.48
  - B) 1.87–3.43
  - C) 1.879–3.439
  - D) 1.865–3.435
9. For the class 16.3–23.8, the width is 8.5.
  - A) True
  - B) False
10. When the range is large, and classes that are several units in width are needed, a \_\_\_\_\_ frequency distribution is used.

11. Find the class with the least number of data values.



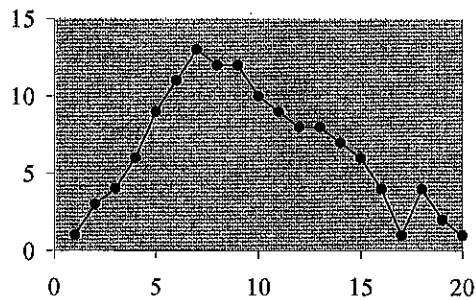
- A) 55-65
- B) 65-75
- C) 75-85
- D) 85-95

12. An ogive is also called a cumulative frequency graph.

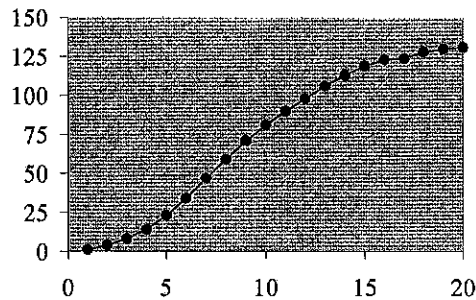
- A) True
- B) False

13. Which of the following could be an ogive?

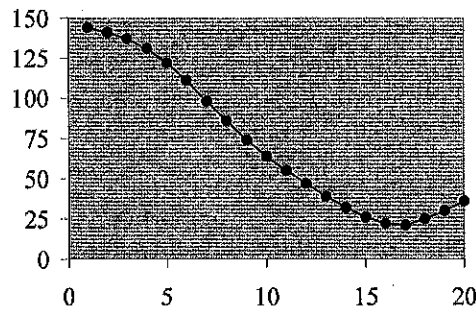
A)



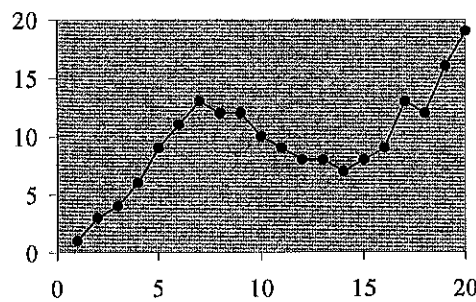
B)



C)



D)

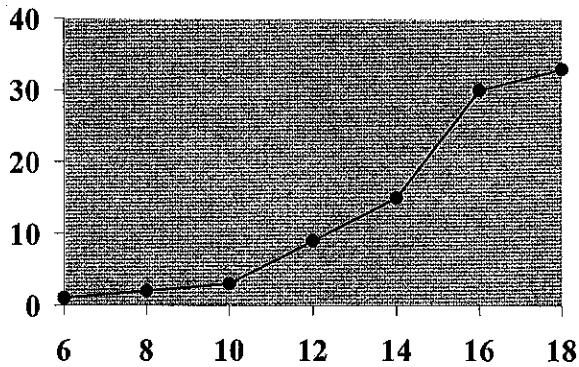


14. For a given data set, the ogive and the frequency polygon will have the same overall shape.

A) True

B) False

15. Using the ogive shown below, what is the cumulative frequency of data values less than or equal to 16 ?



- A) 66
- B) 60
- C) 30
- D) 20

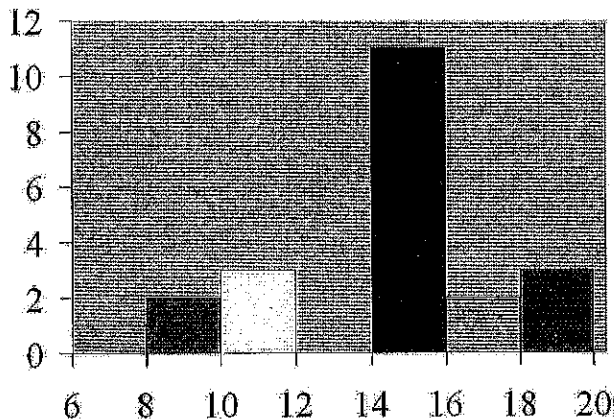
16. Graphs that show distributions using proportions instead of raw data as frequencies are called

- A) relative frequency graphs.
- B) ogive graphs.
- C) histograms.
- D) frequency polygons.

17. The frequency polygon is a graph that displays the data by using lines that connect points plotted for the frequencies at the midpoints of the classes.

- A) True
- B) False

18. How many values are in the data set whose histogram is shown below ?



- A) 6
- B) 22
- C) 76
- D) 72

19. Given the following frequency distribution, how many pieces of data were less than 28.5?

<b>Class Boundaries</b>	<b>Frequencies</b>
13.5–18.5	4
18.5–23.5	9
23.5–28.5	12
28.5–33.5	15
33.5–38.5	17

- A) 12
- B) 13
- C) 25
- D) 44

20. An automobile dealer wants to construct a pie graph to represent types of cars sold in July. He sold 72 cars, 16 of which were convertibles. How many degrees should be used for the convertibles section?

- A)  $60^\circ$
- B)  $80^\circ$
- C)  $100^\circ$
- D)  $50^\circ$

21. If a data set showing types of pizza ordered at a particular restaurant indicates 24 out of 72 orders were for pepperoni pizza, how many degrees would be needed to represent pepperoni pizza in a pie chart?

- A)  $90^\circ$
- B)  $120^\circ$
- C)  $60^\circ$
- D)  $150^\circ$

22. A pie graph is not useful in showing which of the following characteristics of a data set?

- A) frequency changes over time
- B) relative frequencies for each category in the distribution
- C) categories that make up the largest proportions of the total
- D) categories that make up the smallest proportions of the total

23. When making Pareto charts, data should be arranged \_\_\_\_\_ according to frequency.

- A) from smallest to largest
- B) with increasing time
- C) from largest to smallest
- D) clockwise

24. Given the following two sets of data, draw a stem and leaf plot.

12, 22, 22, 24, 34, 31, 26, 35, 27, 39, 49, 10